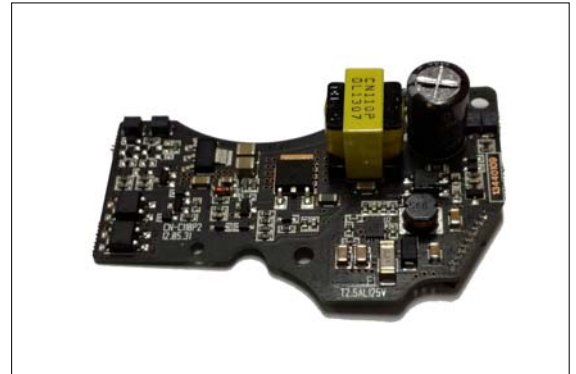


1. Input Condition

- 1) Rated Voltage : PoE(802.3af), DC12V, DC24V.
- 2) Variable Scope for Input voltage :
 - PoE (36~57V),
 - DC(8~36V).

2. Output Ratings

- 1) Rated Voltage : +5.5V.
- 2) Rated Current : 600mA (Typ.).
- 3) Regulated Output Current Variation : 0.1A ~ 0.7A
- 4) Regulated Output Voltage Variation : +5.2V~6.8V.
- 5) Ripple & Noise : 200mVp-p (Max.).



3. Connector Pin Map

■ CN1 (1.27 SOCKET ST 1x10P(L: 2.2))

Pin No.	CN1
1	+5.5V Output
2	+5.5V Output
3	GND
4	GND
5	DC INPUT
6	GND
7	VB-
8	VB+
9	VA-
10	VA+

4. Dimension (Unit mm).

